

REMANUFACTURED STARTERS & ALTERNATORS

As one of the first and largest rotating electric companies to enter the remanufacturing business over 50 years ago, you can trust Delco Remy remanufactured starters and alternators to provide you affordability with original equipment (OE) performance and quality.

Our genuine reman products use the same manufacturing processes as OE, all the way down to the modelling of the production line.

You can count on our starters and alternators always being 100% tested to OE specifications and backed with an industry-leading warranty.

CORELESS OPTIONS ARE AVAILABLE FOR MANY POPULAR PRODUCTS

- No core charge, handling or tracking
- Same Delco Remy Genuine Products quality and design
- Perfect as a low-cost replacement alternative



CORELESS OPTIONS

REMAN PART #	CORELESS REMAN PART#	REMAN DESCRIPTION	NEW SERVICE PART# EQUIVALENT	WAI	WILSON (NEW)	WILSON (REMAN)	LEECE NEVILLE	TRP	FLEETRITE	ROAD CHOICE	ALLIANCE	MERITOR
ALTERNATORS												
10459321	61009223	22SI 12V Pad 150A	19020889	8362N	90-01-4393N	90-01-4393	A22P150	REO22P	FLTAL22150P	ALT8362	22P150	ALT1003
10459190	61009225	22SI 12V Hinge 150A	19020310	8076N	90-01-4297N	90-01-4297		REO22J	FLTAL22150J	ALT8076	22PJ150	ALT1004
61010752	61009226	24SI 12V Pad 160A	8600889	8719N	90-01-4577N	90-01-4577	A24P160	REO24P	FLTAL24160P	ALT8719	24P160	ALT1242
61010753	61009227	24SI 12V Hinge 160A	8600310	8718N	90-01-4576N	90-01-4576	A24J160	REO24J	FLTAL24160J		24J160	ALT1243
8700080	61018105	28SI Pad 12V 160A (plug)	8600201		90-01-4730N							
8700082	61009624	28SI Pad 200A (plug)	8600253	8749N	90-01-4742N	90-01-4742						
8700088	61009224	28SI Pad 200A	8600314	8741N	90-01-4723N	90-01-4723	A28P200		FLTAL28200P		28P200	ALT1280
8700087	61012111	28SI S Hinge 200A	8600313		90-01-4724N	90-01-4724						
8700083	61009625	28SI L Hinge 200A	8600307	8745N	90-01-4725N	90-01-4725	A28J200L		FLTAL28200J	ALT8745	28LH200	
8700018	61011311	35SI 12V Pad 140A	8600066	8609N	90-01-4513N	90-01-4513	A35P140	REO35P	FLTAL35140P	ALT8609	35P140	ALT3650
8700016	61011310	35SI 12V Hinge 140A	8600064	8607N	90-01-4511N	90-01-4511	A35J140	REO35J		ALT8607	35J140	ALT3652
8700047	61011312	36SI 12V Pad 170A	8600127	8614N	90-01-4515N	90-01-4515		REO36PS		ALT8614	36J170	
8700046	61011313	36SI 12V Hinge 170A	8600126	8612N	90-01-4516N	90-01-4516		REO36JS		ALT8612	36P170	
STARTERS												
10461052	8300000	42MT 12V	1990352	6356N	91-01-4166N	91-01-4166	M421052	RE4252	FLTST4200	STA6356	42MT52	STR4200
10461053	8300001	42MT 12V	1990490	6356N	91-01-4166N	91-01-4166		RE4253				STR4207
10461055	8300002	42MT 12V	1990355	6513N	91-01-4295N	91-01-4295	M421055	RE4255	FLTST4201	STA6513		STR4201
61010754	61011314	39MT 12V	8200308	6924N	91-01-4759N	91-01-4759	M39308	RE3908	FLTST3900	STA6924	39MT308	STR4292
8300084	61011315	39MT 12V DTNA	8200434	6919N	91-01-4761N	91-01-4761	M39434	RE3934	FLTST3901	STA6919		STR4293
61002714	61011316	39MT 12V DTNA (2016+)	61008898									
61002699	61011317	39MT 12V Volvo	8201100	6881N	91-01-4807N	91-01-4807						

STARTERS

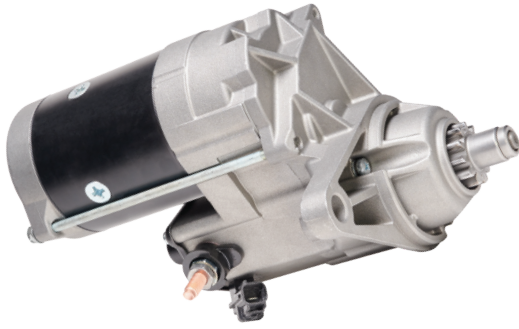
FAMILY	VOLTAGE	PART #S
28MT	12V	10461443, 10461445, 10461446, 10461450, 10461454, 10461474, 10461481, 10465043, 10465150, 10465151, 10465168, 10465239, 10465295
	24V	10461486
29MT	12V	8300063, 8300064, 10461764, 10461765, 10461770, 10461772
37MT	12V	10461008, 10461013, 10461044, 10461058, 10461066, 10461069, 10461089, 10461094, 10461098, 10461108, 10461110, 10461169, 10461170, 10461207, 10461209, 10461225, 10461276, 10461277, 10461298, 10461316, 10461330, 10461416
	24V	10461015, 10461016, 10461257, 10461525
38MT	12V	8300005, 8300021, 8300022, 8300024, 8300026, 8300065, 8300066, 10461068, 10461769
	24V	8300023, 8300025
39MT	12V	8300004, 8300007, 8300008, 8300009, 8300013, 8300015, 8300017, 8300019, 8300020, 8300059, 8300060, 8300061, 8300067, 8300068, 8300084, 10461777, 61002699, 61002714
	24V	8300011, 8300014, 8300016, 8300018
40MT	12V	1114985, 10461045, 10461046, 10461059, 10461060
	24V	1114987, 1990210, 10461047, 10461107
41MT	12V	8300073, 8300074, 10461171, 10461240, 10461282, 10461304, 10461431, 10461435, 10461496
	24V	10461239, 10461333, 10461408, 10461417, 10461528
42MT	12V	8300000, 8300001, 8300002, 8300035, 8300037, 8300078, 8300079, 8300080, 10461021, 10461038, 10461050, 10461051, 10461052, 10461053, 10461055, 10461075, 10461077, 10461078, 10461096, 10461133, 10461164, 10461165, 10461233, 10461265, 10461267, 10461328, 10461329, 10461414, 10461592, 10461778
	24V	8300036, 10461024, 10461025, 10461031, 10461054, 10461068, 10461141
50MT	12V	10461738
	24V	8300023, 10461381, 10461493, 10461739, 10461744
	32V	10461159, 10461161
	64V	10461160
Solenoid	12V	10456393, 10512653
	24V	10456391

WHY CHOOSE REMAN?

- Remanufactured, not rebuilt
- Complete core disassembly and cleaning
- 100% of components assembled, inspected and tested to OE specifications
- Product updates are applied the same as OE and New Service units
- All wear components replaced (such as bearings, bushings, seals and hardware)
- Trusted sales and technical support
- Backed with industry-leading warranty

ALTERNATORS

FAMILY	VOLTAGE	MOUNT	PART #	AMPS
20SI	12V	J180	10459020	60
	24V	J180	1117655, 10459320	35, 45
21SI	12V	J180	10459013, 10459037, 10459046, 10459049, 10459051, 10459453,	100, 130
	24V	J180	10459261, 10459461, 10461235	50, 70
22SI	12V	J180	10459188, 10459189, 10459190, 10459204, 10459456, 10459472, 61009225	100, 130, 145, 150, 160
	12V	Pad	8700053, 8700054, 8700055, 10459320, 10459321, 10459481, 10459483, 10459596, 61009223	
	24V	J180	10459306	
24SI	12V	J180	8700009, 8700010, 8700011, 8700021	100, 130, 145, 160
	12V	Pad	8700008, 8700012, 8700013	130, 145, 160
	24V	J180	8700019	70
26SI	12V	J180	10459065, 10459066, 10459067, 10459077, 10459161	75, 85
	24V	J180	10459064, 10459076	50, 75
28SI	12V	J180	8700083	200
	12V	Pad	8700080, 8700082	160, 200
30SI	12V	J180	10459004, 10459008, 10459079	90, 105
	24V	J180	1117746, 10459002, 10459057, 10459120	60, 75, 100
33SI	24V	J180	10459196, 10459311	100, 75
34SI	24V	Quad	10459199	100
	12V	J180	8700016	
35SI	12V	Quad	8700017	140
	12V	Pad	8700018	
36SI	12V	Quad	8700045	
	12V	J180	8700046	170
	12V	Pad	8700047, 8700067	160, 170



We also offer reman versions of a common industry off-set gear reduction starter, remanufactured to the same stringent standards.

All offered with no core charge.

OFF-SET GEAR REDUCTION STARTERS

NUMBER	APPLICATION	POWER (KW)	ROTATION	MOUNTING	PINION	VOLTAGE	DENSO CROSS REFERENCE #S
61010421	Cummins 7.2L	2.7	Clockwise	Flange	13	12	128000-0210, 128000-0211, 128000-0212, 128000-0213, 128000-0214, 128000-0215, 128000-0216, 128000-0540, 128000-0541, 128000-0542, 128000-0543, 128000-0544, 128000-0545, 128000--2270, 128000-2273, 128080-0540, 128080-0543, 128080-0544, 228000-0621, 228000-1950, 228000-1951, 228000-1953, 228000-4670, 228000-4681, 228000-6980, 228000-6981, 228000--7340, 228000-7341, 228000-7342, 228080-0624, 428000-0190, 428000-0191, 428000-1850, 428000-1860, 428000-1870
61007503	Cummins 6.8L	2.7	Clockwise	Flange	10	12	428080-2870, 428000-2910, 428000-2920
61007504	Cummins 8.3L	4.8	Clockwise	SAE3	10	12	228000-5600, 228000-5601, 228000-5602, 228000-5603, 228000-5620, 228000-5621, 228000-5622, 228000-6390, 228000-6391, 228000-6510, 228000-6511
61007505	Isuzu 4.8L	3.0	Counter Clockwise	Flange	11	12	228000-8180, 228000-8181, 228000-8182
61007506	Isuzu 7.1L	4.0	Clockwise	Flange	11	12	TG228080-9761, 228000-9760, 228000-9761
61007507	Hino 5.3L	2.5	Clockwise	Flange	11	12	228000-6380, 228000-6381, 228000-6383
61007508	Hino 7.7L	4.0	Clockwise	Flange	11	12	428000-2510, 428000-2511
61007509	Hino 8.0L	4.8	Clockwise	Flange	11	12	228000-6260, 228000-6261
61007510	Hino 4.7L	2.5	Clockwise	SAE1	11	12	428000-2500, 428000-2501, 428000-2502, 428000-2503
61007511	Isuzu 3.9, 6.5, 5.8L	3.0	Clockwise	Flange	11	12	9712809-049, 9717809-049, 128000-0490, 128000-0491, 128000-0492, 128000-0494
61007512	Isuzu 7.1L	3.0	Clockwise	Flange	11	12	228000-2800, 228000-2801, 228000-2802, 228000-2803, 228000-2804, 228000-2805, 228000-2806, 228000-2807
61007513	Isuzu 4.8L	3.0	Counter Clockwise	Flange	11	12	228000-7000, 228000-7001, 228000-7002, 228000-7003, 228000-7004

VISIT DELCOREMY.COM TO SEARCH FOR APPLICATIONS AND PART NUMBER CROSS REFERENCES.



® For Customer Service or Technical Assistance call 800-372-0222

04 | 2024
DELCOREMY.COM

